

27 July 2015

ETF Securities Multi Asset Weekly

Global economic recovery in limbo

The global recovery rumbles onward, but the pace is slowing, weighing sentiment. Elevated volatility is a key feature across asset classes. The growth divergence between the US and other major economies will keep a firm bid under the US Dollar, with the FOMC meeting this week in focus. We expect the US is ready to raise rates in September, despite the market pricing in a November hike. Meanwhile, the Greek negotiations are extending, with logistical concerns likely to keep investors wary of being fully committed to European equities. With defensive assets beaten down recently, a surprise rebound is not to be ruled out.

Commodities

Inventory build see oil prices sink again, as USD strength weighs on precious metals. The U.S. Energy Information Administration reported another build in US oil stockpiles last week, prompting WTI crude prices to fall to the lowest level since end-March 2015. Meanwhile, the stronger USD is having an adverse affect across the commodities, space but precious metals, in particular, due to their strong monetary connection are being impacted more than others. However, tighter markets for platinum group metals should help stem the price declines. South Africa's largest platinum miner Lonmin has announced closures to some of its mines, expecting to reduce production by 100,000 ounces of metal in 2015/16 – around 2% of total global mine production. The company indicated that at current price levels, the company is a loss making entity and cost minimization efforts are designed to turn the situation around.

Equities

Chinese equities slump again, as mixed earnings see developed market equities trade choppy ranges. Positive sentiment about Chinese intervention appeared to fade in early trading this week, with a sharp sell-off in Chinese equity benchmarks. Policymakers must tread a fine line between restoring confidence in local markets with domestic investors and convincing foreign investors of reforms that make markets more transparent and less susceptible to manipulation. We expect a relaxing of restrictions will be gradual but inevitably encourage more participation and greater stability. Q2 developed market earnings have been mixed, and combined with ongoing unease over Greek bailout discussions, European equity gains have faded over the past week. The discussions concerning the method of financing another Greek bailout are likely to be prolonged, and investors will remain on edge to see if depositors and/or bondholders need to take haircuts in the bailout process.

Currencies

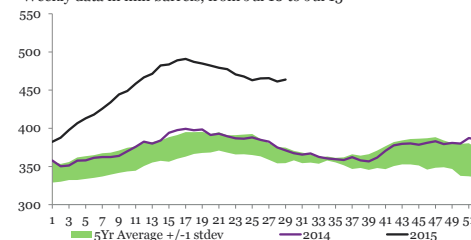
FOMC in focus, more USD strength. We expect the Fed will continue to be balanced in its rhetoric and highlight the gains made in the jobs environment. There is an interesting divergence between market pricing and economic consensus on when the Fed will raise rate: the former is pricing a November hike, while economists expect a September tightening. Accordingly, we feel that as the market begins to price in a September hike, USD will benefit. The brief respite for commodity currencies is unlikely to last. With negative sentiment prevailing over fundamental conditions, we expect the recent rebound in commodity currencies is unlikely to last in the near-term. Weaker oil prices are weighing on CAD and NOK, while central bank rhetoric and negative China sentiment is pressuring AUD and NZD.

Oil surplus weighs on price

Weekly data, Jan 2014 to Jul 2015

US Oil Inventory

Weekly data in mln barrels, from Jul 10 to Jul 15

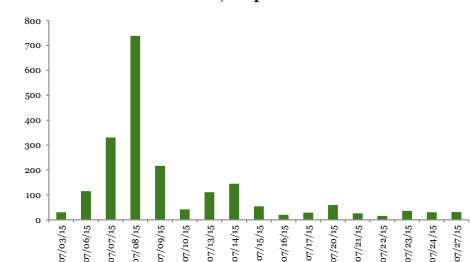


Source: DOE, Bloomberg, ETF Securities

China equity halts stabilise

Daily data, 3 Jul 2015 – 27 Jul 2015

Number of Halts, Suspensions and Closes



Source: Bloomberg, ETF Securities

USD to strengthen

Daily, Jan 1995 to Jul 2015

US Dollar Cycles



Source: Bloomberg, ETF Securities

Source: Bloomberg, ETF Securities

Top and Bottom 10 Performers by Asset class

Commodities

Top 10	-1 week	-3 Months	-6 Months	Bottom 10	-1 week	-3 Months	-6 Months
ETFS Carbon	5.4%	10.5%	16.7%	ETFS WTI 2mth	-5.3%	-19.3%	-4.2%
ETFS Longer Dated Lean Hogs	0.3%	-10.3%	-13.0%	ETFS Longer Dated Grains	-5.4%	2.3%	-2.5%
ETFS Lean Hogs	0.3%	-2.5%	-10.3%	ETFS Grains	-5.4%	3.2%	-1.6%
ETFS Physical Palladium	-0.2%	-17.2%	-17.9%	ETFS WTI Crude Oil	-5.5%	-19.5%	-5.0%
ETFS Physical Silver	-0.3%	-6.3%	-18.6%	ETFS Copper	-5.5%	-12.1%	-5.3%
ETFS Longer Dated Natural Gas	-0.6%	4.4%	-8.7%	ETFS Coffee	-5.7%	-15.7%	-29.4%
ETFS Soybean Oil	-0.7%	-2.9%	-2.4%	ETFS Lead	-5.8%	-15.5%	-7.5%
ETFS Cotton	-0.8%	-2.4%	10.5%	ETFS Sugar	-6.2%	-14.5%	-26.0%
ETFS White Metal Basket Trust	-0.8%	-10.5%	-19.9%	ETFS Corn	-6.2%	4.7%	-2.3%
ETFS Tin	-1.0%	-3.6%	-23.7%	ETFS Wheat	-7.3%	2.5%	-2.9%

Note: Tables based on performance of ETF Securities commodity ETPs. All data are to end of trade on 23 July. Short and Leveraged commodity ETPs are excluded from the performance tables.

Equities

Top 5	-1 week	-3 Months	-6 Months	Bottom 5	-1 week	-3 Months	-6 Months
ETFS-E Fund MSCI China A GO UCITS ETF	7.4%	-7.4%	25.2%	ETFS DAX® Daily 2x Long GO UCITS ETF	-3.5%	-5.3%	13.5%
ETFS FTSE 100® Super Short Strategy (Daily 2x) GO UCITS ETF	4.1%	9.1%	-1.2%	ETFS DJ-UBS Longer Dated All Commodities GO UCITS ETF	-3.6%	-7.7%	-7.5%
ETFS DAX® Daily 2x Short GO UCITS ETF	3.5%	-1.1%	-20.5%	ETFS FTSE 100® Leveraged (Daily 2x) GO UCITS ETF	-4.1%	-10.7%	-3.5%
ETFS FTSE® MIB Super Short Strategy (Daily 2x) GO UCITS ETF	1.1%	-12.9%	-33.8%	ETFS US Energy Infrastructure MLP GO UCITS ETF	-6.3%	-18.0%	-17.3%
ETFS FTSE® MIB Leveraged (Daily 2x) GO UCITS ETF	-1.3%	4.6%	32.4%	ETFS DAXglobal Gold Mining GO UCITS ETF	-13.9%	-26.9%	-33.1%

Note: Tables based on performance of ETF Securities equity ETPs since listing. All data are to end of trade on 23 July. ETFs not listed over full period have performance cell left blank.

Currencies

Top 10	-1 week	-3 Months	-6 Months	Bottom 10	-1 week	-3 Months	-6 Months
ETFS Long CAD Short USD	3.6%	-2.7%	-0.9%	ETFS Short NZD Long GBP	-2.2%	15.6%	12.8%
ETFS Long AUD Short USD	3.5%	-0.9%	-2.8%	ETFS Short NOK Long GBP	-2.3%	4.0%	4.3%
ETFS Bearish USD vs Commodity Currency Basket Securities	3.5%	-2.5%	-2.5%	ETFS Short AUD Long GBP	-2.4%	4.8%	6.3%
ETFS Long NOK Short USD	3.5%	-0.2%	-1.2%	ETFS Short CAD Long GBP	-2.5%	6.9%	4.5%
ETFS Long NZD Short USD	3.4%	-10.4%	-8.7%	ETFS Short SEK Long USD	-2.8%	-4.5%	-0.5%
ETFS Long SEK Short USD	3.0%	4.0%	-0.9%	ETFS Short NOK Long USD	-3.1%	-0.7%	-0.8%
ETFS G10 vs USD Multi Strategy FX Basket Security	2.8%	-2.5%	-0.9%	ETFS Short NZD Long USD	-3.1%	10.8%	7.8%
ETFS Long CAD Short GBP	2.7%	-6.9%	-5.4%	ETFS Bullish USD vs Commodity Currency Basket Securities	-3.2%	1.9%	1.0%
ETFS Long AUD Short GBP	2.6%	-5.2%	-7.3%	ETFS Short AUD Long USD	-3.3%	0.1%	1.3%
ETFS Long NOK Short GBP	2.6%	-4.5%	-5.7%	ETFS Short CAD Long USD	-3.3%	2.2%	-0.4%

Note: Tables based on performance of ETF Securities currency ETPs. All data are to end of trade on 23 July. 3x and 5x currency ETPs are excluded from the performance tables.

Calendar for the Coming Week

Date	Time		Event		Survey	Actual	Prior
07/27/2015	13:30	US	Durable Goods Orders	Jun	3.5%	--	-1.8%
07/28/2015	09:30	UK	GDP YoY	2Q A	2.6%	--	2.9%
07/28/2015	15:00	US	Consumer Confidence Index	Jul	100	--	101.4
07/29/2015	12:00	US	MBA Mortgage Applications	Jul-24	--	--	0.1%
07/29/2015	15:00	US	Pending Home Sales MoM	Jun	1.0%	--	0.9%
07/29/2015	19:00	US	FOMC Rate Decision (Upper Bound)	Jul-29	0.25%	--	0.25%
07/30/2015	00:50	JN	Industrial Production YoY	Jun P	1.3%	--	-3.9%
07/30/2015	08:55	GE	Unemployment Claims Rate SA	Jul	6.4%	--	6.4%
07/30/2015	10:00	EC	Consumer Confidence	Jul F	-7.1	--	-7.1
07/30/2015	13:00	GE	CPI YoY	Jul P	0.3%	--	0.3%
07/30/2015	13:30	US	GDP Annualized QoQ	2Q A	2.6%	--	-0.2%
07/30/2015	13:30	US	Initial Jobless Claims	Jul-25	270K	--	255K
07/31/2015	00:30	JN	Jobless Rate	Jun	3.3%	--	3.3%
07/31/2015	00:30	JN	Natl CPI YoY	Jun	0.3%	--	0.5%
07/31/2015	10:00	EC	Unemployment Rate	Jun	11.0%	--	11.1%
07/31/2015	15:00	US	U. of Mich. Sentiment	Jul F	94	--	93.3

Source: Bloomberg, ETF Securities

Equity ETPs - Performance and Assets

EQUITY				Price Performance				AUM (m\$)
				Last Week	1 Month	3 Months	6 Months	\$558.3
Thematic	AGRI	USD	ETFS S-Network Global Agri Business GO UCITS ETF	-1.9%	-2.8%	-0.2%	0.4%	\$21.2
	AUCO	USD	ETFS DAXglobal Gold Mining GO UCITS ETF	-13.9%	-22.4%	-26.9%	-33.1%	\$45.3
	RTWO	USD	ETFS Russell 2000 US Small Cap GO UCITS ETF	-2.2%	-3.8%	-1.9%	5.2%	\$45.4
	COMF	USD	ETFS DJ-UBS Longer Dated All Commodities GO UCITS ETF	-3.6%	-6.5%	-7.7%	-7.5%	\$139.1
	MLPI	USD	ETFS US Energy Infrastructure MLP GO UCITS ETF	-6.3%	-12.3%	-18.0%	-17.3%	\$24.0
	ROBO	USD	ROBO-STOX® Global Robotics and Automation GO UCITS ETF	-1.8%	-6.3%	-7.9%	-1.4%	\$40.9
	CASH	USD	ETFS-E Fund MSCI China A GO UCITS ETF	7.4%	-11.0%	-7.4%	25.2%	\$30.8
-2x	SUK2	GBP	ETFS FTSE 100® Super Short Strategy (Daily 2x) GO UCITS ETF	4.1%	4.6%	9.1%	-1.2%	\$24.4
	DES2	EUR	ETFS DAX® Daily 2x Short GO UCITS ETF	3.5%	-1.1%	-1.1%	-20.5%	\$75.7
	ITS2	EUR	ETFS FTSE® MIB Super Short Strategy (Daily 2x) GO UCITS ETF	1.1%	-3.6%	-12.9%	-33.8%	\$6.8
2x	LUK2	GBP	ETFS FTSE 100® Leveraged (Daily 2x) GO UCITS ETF	-4.1%	-5.4%	-10.7%	-3.5%	\$22.6
	DEL2	EUR	ETFS DAX® Daily 2x Long GO UCITS ETF	-3.5%	-1.1%	-5.3%	13.5%	\$65.3
	ITL2	EUR	ETFS FTSE® MIB Leveraged (Daily 2x) GO UCITS ETF	-1.3%	-0.6%	4.6%	32.4%	\$16.9
-3x	FR3S	EUR	ETFS 3x Daily Short CAC 40	2.0%	-5.6%	-9.0%	-37.0%	\$0.2
	GE3S	EUR	ETFS 3x Daily Short DAX 30	5.3%	-2.2%	-3.3%	-30.7%	\$7.4
	EU3S	EUR	ETFS 3x Daily Short Euro Stoxx 50	3.4%	-4.6%	-9.3%	-34.0%	\$2.4
	UK3S	GBP	ETFS 3x Daily Short FTSE 100	6.3%	6.7%	13.4%	-2.6%	\$5.0
	IT3S	EUR	ETFS 3x Daily Short FTSE MIB	1.7%	-6.8%	-21.0%	-48.2%	\$4.3
3x	FR3L	EUR	ETFS 3x Daily Long CAC 40	-2.1%	0.3%	-4.8%	31.4%	\$1.9
	GE3L	EUR	ETFS 3x Daily Long DAX 30	-5.2%	-2.3%	-9.6%	17.6%	\$15.8
	EU3L	EUR	ETFS 3x Daily Long Euro Stoxx 50	-3.4%	-1.0%	-5.0%	23.3%	\$7.8
	UK3L	GBP	ETFS 3x Daily Long FTSE 100	-6.1%	-8.2%	-15.9%	-5.5%	\$3.2
	IT3L	EUR	ETFS 3x Daily Long FTSE MIB	-2.0%	-2.4%	4.1%	47.0%	\$15.9

Source: ETF Securities.

Commodity ETPs - Performance and Assets

BROAD				Price Performance				AUM (m\$)
				Last Week	1 Month	3 Months	6 Months	\$364.8
Long	AIGC	USD	ETFS All Commodities	-3.8%	-6.3%	-7.2%	-7.1%	\$279.4
	FAIG	USD	ETFS Longer Dated All Commodities	-3.6%	-6.4%	-7.6%	-7.6%	\$3.1
	AIGX	USD	ETFS Ex-Energy	-4.3%	-3.2%	-5.4%	-9.5%	\$0.7
	EXEF	USD	ETFS Longer Dated Ex-Energy	-4.2%	-3.3%	-5.6%	-10.0%	\$0.1
	XFRM	USD	ETFS Ex-Agriculture and Livestock	-3.5%	-9.7%	-10.4%	-8.2%	\$63.2
-1x	SALL	USD	ETFS Daily Short All Commodities	3.8%	6.3%	6.6%	4.9%	\$3.7
	SNEY	USD	ETFS Daily Short Ex-Energy	4.4%	2.8%	4.6%	8.3%	\$0.0
2x	LALL	USD	ETFS Daily Leveraged All Commodities	-7.5%	-12.6%	-14.7%	-14.9%	\$1.7
	LNEY	USD	ETFS Daily Leveraged Ex-Energy	-8.5%	-6.4%	-10.9%	-18.8%	\$0.0
FX Hedged	EALL	EUR	ETFS EUR Daily Hedged All Commodities	-3.8%	-6.5%	-7.7%	-7.8%	\$11.5
	PALL	GBP	ETFS GBP Daily Hedged All Commodities	-3.8%	-6.4%	-7.4%	-7.3%	\$0.1
	EFCM	EUR	ETFS EUR Daily Hedged Longer Dated All Commodities	-3.6%	-6.6%	-8.0%	-8.1%	\$0.3
	PFCM	GBP	ETFS GBP Daily Hedged Longer Dated All Commodities	-3.6%	-6.5%	-7.8%	-7.7%	\$0.4
	CFCM	CHF	Swiss Franc Daily Hedged Longer Dated All Commodities	-3.6%	-6.7%	-8.2%	-8.5%	\$0.5
LIVESTOCK				Last Week	1 Month	3 Months	6 Months	\$20.0
Long	AIGL	USD	ETFS Livestock	-2.1%	-3.2%	-3.7%	-3.0%	\$7.2
	FLIV	USD	ETFS Longer Dated Livestock	-1.7%	-3.3%	-5.1%	-3.5%	\$1.7
	CATL	USD	ETFS Live Cattle	-3.2%	-6.8%	-4.3%	1.1%	\$1.6
	CATG	USD	ETFS Longer Dated Live Cattle	-2.6%	-5.4%	-2.4%	1.9%	\$0.0
	HOGS	USD	ETFS Lean Hogs	0.3%	4.9%	-2.5%	-10.3%	\$5.7
	HOGF	USD	ETFS Longer Dated Lean Hogs	0.3%	1.2%	-10.3%	-13.0%	\$0.1
-1x	SLST	USD	ETFS Daily Short Livestock	2.0%	2.4%	2.9%	0.8%	\$0.1
	SLCT	USD	ETFS Daily Short Live Cattle	3.2%	6.9%	1.2%	-2.0%	\$0.7
	SLHO	USD	ETFS Daily Short Lean Hogs	-0.5%	-5.5%	0.6%	6.3%	\$1.1
2x	LLST	USD	ETFS Daily Leveraged Livestock	-4.0%	-5.6%	-8.0%	-7.8%	\$0.2
	LLCT	USD	ETFS Daily Leveraged Live Cattle	-6.4%	-13.3%	-5.1%	-3.4%	\$0.2
	LLHO	USD	ETFS Daily Leveraged Lean Hogs	0.3%	9.3%	-6.2%	-22.2%	\$1.5

Source: ETF Securities.

Commodity ETPs - Performance and Assets (Continued)

				Price Performance				AUM (m\$)
AGRICULTURE				Last Week	1 Month	3 Months	6 Months	\$690.5
Long	AIGA	USD	ETFS Agriculture	-4.7%	1.5%	-0.4%	-5.5%	\$252.0
	FAGR	USD	ETFS Longer Dated Agriculture	-4.6%	1.2%	-1.1%	-7.0%	\$16.5
	AIGG	USD	ETFS Grains	-5.4%	3.6%	3.2%	-1.6%	\$38.7
	GRAF	USD	ETFS Longer Dated Grains	-5.4%	3.5%	2.3%	-2.5%	\$2.5
	WEAT	USD	ETFS Wheat	-7.3%	-1.1%	2.5%	-2.9%	\$65.4
	CORN	USD	ETFS Corn	-6.2%	8.3%	4.7%	-2.3%	\$30.0
	SOYB	USD	ETFS Soybeans	-3.0%	2.0%	2.7%	2.2%	\$11.7
	AIGS	USD	ETFS Softs	-4.7%	-2.7%	-12.0%	-20.0%	\$3.8
	SOFF	USD	ETFS Longer Dated Softs	-4.5%	-3.4%	-11.5%	-22.9%	\$0.3
	SUGA	USD	ETFS Sugar	-6.2%	-2.3%	-14.5%	-26.0%	\$42.5
	COTN	USD	ETFS Cotton	-0.8%	0.2%	-2.4%	10.5%	\$33.3
	COFF	USD	ETFS Coffee	-5.7%	-6.4%	-15.7%	-29.4%	\$43.3
Short	SOYO	USD	ETFS Soybean Oil	-0.7%	-4.9%	-2.9%	-2.4%	\$3.5
	COCO	USD	ETFS Cocoa	-3.3%	-0.4%	15.3%	17.2%	\$11.0
	SAGR	USD	ETFS Daily Short Agriculture	4.8%	-2.2%	-1.0%	3.1%	\$0.1
	SGRA	USD	ETFS Daily Short Grains	5.6%	-4.5%	-5.1%	-2.0%	\$0.1
	SWEA	USD	ETFS Daily Short Wheat	7.5%	-0.4%	-6.4%	-4.0%	\$1.4
	SCOR	USD	ETFS Daily Short Corn	6.4%	-8.9%	-6.8%	-1.8%	\$0.6
	SSOB	USD	ETFS Daily Short Soybeans	3.0%	-2.8%	-4.3%	-5.1%	\$1.2
	SSFT	USD	ETFS Daily Short Softs	4.8%	2.2%	11.7%	20.8%	\$0.0
	SSUG	USD	ETFS Daily Short Sugar	6.3%	1.2%	13.8%	28.2%	\$2.4
	SCTO	USD	ETFS Daily Short Cotton	0.7%	-0.7%	0.9%	-12.4%	\$1.5
	SCFE	USD	ETFS Daily Short Coffee	5.9%	5.9%	15.2%	30.9%	\$1.8
	SSYO	USD	ETFS Daily Short Soybean Oil	0.6%	4.4%	0.8%	-1.2%	\$0.5
Leveraged	SCOC	USD	ETFS Daily Short Cocoa	3.3%	0.0%	-14.5%	-17.1%	\$1.1
	LAGR	USD	ETFS Daily Leveraged Agriculture	-9.3%	2.5%	-1.8%	-12.3%	\$3.8
	LGRA	USD	ETFS Daily Leveraged Grains	-10.7%	6.7%	5.0%	-5.4%	\$0.6
	LWEA	USD	ETFS Daily Leveraged Wheat	-14.2%	-3.5%	1.6%	-11.0%	\$27.1
	LCOR	USD	ETFS Daily Leveraged Corn	-12.3%	16.1%	7.8%	-7.3%	\$6.8
	LSOB	USD	ETFS Daily Leveraged Soybeans	-6.0%	3.3%	4.3%	2.7%	\$1.5
	LSFT	USD	ETFS Daily Leveraged Softs	-9.3%	-5.7%	-23.3%	-37.5%	\$0.3
	LSUG	USD	ETFS Daily Leveraged Sugar	-12.3%	-5.4%	-28.4%	-47.4%	\$20.0
	LCTO	USD	ETFS Daily Leveraged Cotton	-1.6%	0.1%	-5.7%	19.6%	\$3.1
	LCFE	USD	ETFS Daily Leveraged Coffee	-11.1%	-12.9%	-30.6%	-53.3%	\$34.3
	LSYO	USD	ETFS Daily Leveraged Soybean Oil	-1.4%	-10.1%	-7.0%	-7.2%	\$0.9
	LCOC	USD	ETFS Daily Leveraged Cocoa	-6.6%	-1.0%	31.8%	35.0%	\$2.6
FX Hedged	EAGR	EUR	ETFS EUR Daily Hedged Agriculture	-4.7%	1.4%	-0.8%	-6.2%	\$1.1
	PAGR	GBP	ETFS GBP Daily Hedged Agriculture	-4.7%	1.5%	-0.6%	-5.8%	\$0.2
	CAGT	CHF	Swiss Franc Daily Hedged Agriculture	-4.8%	1.3%	-1.0%	-6.7%	\$0.7
	EFCM	EUR	ETFS EUR Daily Hedged Longer Dated Agriculture	-4.7%	1.1%	-1.6%	-7.9%	\$3.8
	PFAG	GBP	ETFS GBP Daily Hedged Longer Dated Agriculture	-4.7%	1.2%	-1.4%	-7.5%	\$0.0
	CFAG	CHF	Swiss Franc Daily Hedged Longer Dated Agriculture	-4.7%	1.0%	-1.8%	-8.3%	\$0.5
	CGRN	CHF	Swiss Franc Daily Hedged Grains	-5.5%	3.5%	2.6%	-2.7%	\$0.8
	EWAT	EUR	ETFS EUR Daily Hedged Wheat	-7.3%	-1.2%	2.2%	-3.6%	\$3.0
	CWAT	CHF	Swiss Franc Daily Hedged Wheat	-7.3%	-1.3%	1.9%	-4.1%	\$1.1
	ECRN	EUR	ETFS EUR Daily Hedged Corn	-6.3%	8.2%	4.4%	-3.0%	\$1.9
	CCOR	CHF	Swiss Franc Daily Hedged Corn	-6.3%	8.2%	4.2%	-3.4%	\$0.7
	ESoy	EUR	ETFS EUR Daily Hedged Soybeans	-3.0%	1.9%	2.4%	1.6%	\$0.7
	CSoy	CHF	Swiss Franc Daily Hedged Soybeans	-3.1%	1.8%	2.2%	1.2%	\$1.1
	CSFT	CHF	Swiss Franc Daily Hedged Softs	-4.8%	-2.9%	-12.4%	-20.9%	\$0.6
	ECTN	EUR	ETFS EUR Daily Hedged Cotton	-0.8%	0.2%	-2.8%	9.7%	\$0.6
	CCTN	CHF	Swiss Franc Daily Hedged Cotton	-0.8%	0.1%	-3.0%	9.3%	\$1.1
	ECOF	EUR	ETFS EUR Daily Hedged Coffee	-5.7%	-6.4%	-16.0%	-29.9%	\$1.7
	CCOF	CHF	Swiss Franc Daily Hedged Coffee	-5.7%	-6.5%	-16.2%	-30.3%	\$1.1
	ESUG	EUR	ETFS EUR Daily Hedged Sugar	-6.2%	-2.4%	-14.7%	-26.4%	\$1.0
	CSUG	CHF	Swiss Franc Daily Hedged Sugar	-6.3%	-2.5%	-14.9%	-26.8%	\$0.9
	CCOC	CHF	Swiss Franc Daily Hedged Cocoa	-3.4%	-0.6%	14.7%	15.8%	\$1.9

Source: ETF Securities.

Commodity ETPs - Performance and Assets (Continued)

ENERGY				Price Performance				AUM (m\$)
				Last Week	1 Month	3 Months	6 Months	\$1,599.2
Long	AIGE	USD	ETFS Energy	-2.7%	-11.9%	-10.8%	-1.9%	\$140.7
	ENEF	USD	ETFS Longer Dated Energy	-2.4%	-12.2%	-11.5%	-2.5%	\$40.1
	AIGO	USD	ETFS Petroleum	-3.2%	-16.0%	-15.5%	2.5%	\$13.7
	FPET	USD	ETFS Longer Dated Petroleum	-3.1%	-16.2%	-16.3%	0.1%	\$0.3
	NGAS	USD	ETFS Natural Gas	-1.3%	1.9%	5.3%	-12.5%	\$79.1
	NGAF	USD	ETFS Longer Dated Natural Gas	-0.6%	0.4%	4.4%	-8.7%	\$2.4
	BRNT	USD	ETFS Brent Crude	-2.8%	-15.2%	-17.1%	2.9%	\$74.1
	FBRT	USD	ETFS Longer Dated Brent Crude	-2.6%	-15.1%	-16.6%	0.4%	\$0.4
	CRUD	USD	ETFS WTI Crude Oil	-5.5%	-21.1%	-19.5%	-5.0%	\$531.2
	FCRU	USD	ETFS Longer Dated WTI Crude Oil	-4.5%	-19.5%	-18.9%	-4.3%	\$2.0
	UGAS	USD	ETFS Gasoline	-1.9%	-9.7%	-5.1%	17.5%	\$11.1
	HEAT	USD	ETFS Heating Oil	-1.1%	-14.0%	-15.2%	1.6%	\$6.7
	HEAF	USD	ETFS Longer Dated Heating Oil	-2.1%	-14.1%	-15.1%	0.0%	\$0.1
	OILB	USD	ETFS Brent 1mth	-2.9%	-15.0%	-17.6%	4.2%	\$312.4
	OILW	USD	ETFS WTI 2mth	-5.3%	-20.8%	-19.3%	-4.2%	\$39.9
	OSB1	USD	ETFS Brent 1yr	-1.9%	-13.0%	-14.5%	-1.0%	\$3.1
	OSB2	USD	ETFS Brent 2yr	-1.4%	-10.3%	-12.0%	-3.1%	\$0.4
	OSB3	USD	ETFS Brent 3yr	-1.1%	-8.5%	-10.2%	-4.3%	\$2.2
	OSW1	USD	ETFS WTI 1yr	-3.5%	-15.9%	-16.3%	-4.8%	\$2.3
	OSW2	USD	ETFS WTI 2yr	-2.5%	-11.6%	-13.0%	-6.2%	\$1.0
	OSW3	USD	ETFS WTI 3yr	-2.2%	-9.0%	-10.6%	-6.1%	\$0.4
	CARB	EUR	ETFS Carbon	5.4%	7.4%	10.5%	16.7%	\$1.7
Short	SNRG	USD	ETFS Daily Short Energy	2.7%	12.5%	9.4%	-4.6%	\$0.2
	SPET	USD	ETFS Daily Short Petroleum	3.2%	17.5%	14.8%	-11.0%	\$0.3
	SNGA	USD	ETFS Daily Short Natural Gas	1.1%	-2.9%	-8.9%	4.7%	\$3.7
	SBRT	USD	ETFS Daily Short Brent Crude	2.8%	16.2%	16.8%	-11.9%	\$2.4
	SOIL	USD	ETFS Daily Short WTI Crude Oil	5.6%	24.8%	20.2%	-5.6%	\$15.4
	SGAS	USD	ETFS Daily Short Gasoline	1.8%	9.5%	2.4%	-21.7%	\$1.1
Leveraged	SHEA	USD	ETFS Daily Short Heating Oil	1.0%	15.1%	14.8%	-8.7%	\$0.8
	LNRG	USD	ETFS Daily Leveraged Energy	-5.5%	-23.0%	-21.9%	-8.6%	\$0.3
	LPET	USD	ETFS Daily Leveraged Petroleum	-6.5%	-30.3%	-30.2%	-2.7%	\$10.3
	LNGA	USD	ETFS Daily Leveraged Natural Gas	-2.7%	3.1%	7.0%	-29.0%	\$63.1
	LBRT	USD	ETFS Daily Leveraged Brent Crude	-5.6%	-29.1%	-33.1%	-2.9%	\$10.4
	LOIL	USD	ETFS Daily Leveraged WTI Crude Oil	-10.8%	-38.6%	-37.1%	-18.3%	\$123.4
FX Hedged	LGAS	USD	ETFS Daily Leveraged Gasoline	-3.9%	-19.2%	-12.0%	28.6%	\$1.6
	LHEA	USD	ETFS Daily Leveraged Heating Oil	-2.1%	-26.8%	-29.7%	-3.0%	\$0.7
	PENR	GBP	ETFS GBP Daily Hedged Energy	-2.7%	-11.9%	-11.0%	-2.0%	\$0.2
	CEGY	CHF	Swiss Franc Daily Hedged Energy	-2.8%	-12.1%	-11.3%	-3.0%	\$0.4
	PFEN	GBP	ETFS GBP Daily Hedged Longer Dated Energy	-2.4%	-12.2%	-11.7%	-2.4%	\$0.0
	CFEN	CHF	Swiss Franc Daily Hedged Longer Dated Energy	-2.4%	-12.4%	-12.0%	-3.3%	\$0.7
	ENG5	EUR	ETFS EUR Daily Hedged Natural Gas	-1.3%	1.9%	4.9%	-13.0%	\$1.7
	PNGA	GBP	ETFS GBP Daily Hedged Natural Gas	-1.3%	1.9%	5.0%	-12.7%	\$0.9
	CNGA	CHF	Swiss Franc Daily Hedged Natural Gas	-1.3%	1.8%	4.8%	-13.5%	\$0.8
	EBRT	EUR	ETFS EUR Daily Hedged Brent Crude	-2.8%	-15.3%	-17.4%	1.9%	\$14.5
	PBRT	GBP	ETFS GBP Daily Hedged Brent Crude Oil	-2.8%	-15.2%	-17.2%	2.7%	\$39.0
	CBRT	CHF	Swiss Franc Daily Hedged Brent Crude	-2.9%	-15.3%	-17.6%	1.6%	\$4.0
	ECRD	EUR	ETFS EUR Daily Hedged WTI Crude Oil	-5.5%	-21.2%	-19.9%	-6.0%	\$31.4
	PCRD	GBP	ETFS GBP Daily Hedged WTI Crude Oil	-5.5%	-21.1%	-19.7%	-5.3%	\$3.3
	CCRD	CHF	Swiss Franc Daily Hedged WTI Crude Oil	-5.5%	-21.3%	-20.1%	-6.4%	\$3.5

Source: ETF Securities.

Commodity ETPs - Performance and Assets (Continued)

				Price Performance				AUM (m\$)
INDUSTRIAL METALS				Last Week	1 Month	3 Months	6 Months	\$584.0
Long	AIGI	USD	ETFS Industrial Metals	-4.8%	-7.6%	-11.3%	-10.1%	\$123.7
	FIND	USD	ETFS Longer Dated Industrial Metals	-4.5%	-7.4%	-10.7%	-9.4%	\$40.0
	ALUM	USD	ETFS Aluminium	-4.9%	-6.1%	-10.3%	-13.9%	\$91.9
	COPA	USD	ETFS Copper	-5.5%	-8.9%	-12.1%	-5.3%	\$114.7
	ZINC	USD	ETFS Zinc	-4.5%	-3.8%	-11.6%	-6.7%	\$15.8
	NICK	USD	ETFS Nickel	-1.7%	-11.3%	-10.5%	-21.3%	\$102.1
	TINM	USD	ETFS Tin	-1.0%	-2.7%	-3.6%	-23.7%	\$1.4
	LEED	USD	ETFS Lead	-5.8%	-3.8%	-15.5%	-7.5%	\$0.7
Short	SIME	USD	ETFS Daily Short Industrial Metals	4.9%	7.5%	11.0%	8.0%	\$0.7
	SALU	USD	ETFS Daily Short Aluminium	5.0%	5.9%	9.6%	12.8%	\$0.5
	SCOP	USD	ETFS Daily Short Copper	5.6%	9.0%	11.9%	1.9%	\$46.6
	SZIC	USD	ETFS Daily Short Zinc	4.5%	3.2%	11.1%	3.9%	\$0.2
	SNIK	USD	ETFS Daily Short Nickel	1.6%	10.2%	7.1%	18.7%	\$1.0
	STIM	USD	ETFS Daily Short Tin	0.5%	1.2%	0.9%	24.3%	\$1.6
	SLEA	USD	ETFS Daily Short Lead	6.0%	3.1%	15.7%	3.8%	\$0.6
Leveraged	LIME	USD	ETFS Daily Leveraged Industrial Metal	-9.4%	-15.0%	-22.1%	-20.5%	\$1.1
	LALU	USD	ETFS Daily Leveraged Aluminium	-9.7%	-12.0%	-20.4%	-27.2%	\$4.7
	LCOP	USD	ETFS Daily Leveraged Copper	-10.7%	-17.3%	-23.5%	-12.5%	\$8.7
	LZIC	USD	ETFS Daily Leveraged Zinc	-8.8%	-7.9%	-22.8%	-14.7%	\$1.2
	LNIK	USD	ETFS Daily Leveraged Nickel	-3.5%	-23.0%	-23.0%	-41.6%	\$13.5
	LTIM	USD	ETFS Daily Leveraged Tin	-2.3%	-6.4%	-8.9%	-44.1%	\$2.5
	LLEA	USD	ETFS Daily Leveraged Lead	-11.4%	-8.0%	-29.7%	-17.0%	\$0.9
FX Hedged	EIMT	EUR	ETFS EUR Daily Hedged Industrial Metals	-4.8%	-7.7%	-11.6%	-10.5%	\$0.4
	PIMT	GBP	ETFS GBP Daily Hedged Industrial Metals	-4.8%	-7.6%	-11.4%	-10.2%	\$0.4
	CIMT	CHF	Swiss Franc Daily Hedged Industrial Metals	-4.8%	-7.7%	-11.8%	-10.9%	\$0.7
	EALU	EUR	ETFS EUR Daily Hedged Aluminium	-4.9%	-6.1%	-10.5%	-14.3%	\$0.6
	CALU	CHF	Swiss Franc Daily Hedged Aluminium	-4.9%	-6.2%	-10.7%	-14.7%	\$0.5
	ECOP	EUR	ETFS EUR Daily Hedged Copper	-5.5%	-9.0%	-12.4%	-5.9%	\$1.4
	PCOP	GBP	ETFS GBP Daily Hedged Copper	-5.5%	-8.9%	-12.2%	-5.5%	\$0.7
	CCPP	CHF	Swiss Franc Daily Hedged Copper	-5.5%	-9.0%	-12.6%	-6.3%	\$0.6
	ENIK	EUR	ETFS EUR Daily Hedged Nickel	-1.8%	-11.4%	-10.8%	-21.8%	\$1.1
	CNIK	CHF	Swiss Franc Daily Hedged Nickel	-1.8%	-11.4%	-10.9%	-22.1%	\$0.8
	EZNC	EUR	ETFS EUR Daily Hedged Zinc	-4.5%	-3.9%	-11.9%	-7.2%	\$0.4
	CZNC	CHF	Swiss Franc Daily Hedged Zinc	-4.5%	-3.9%	-12.0%	-7.6%	\$0.6
	CTIN	CHF	Swiss Franc Daily Hedged Tin	-1.0%	-2.7%	-4.0%	-24.4%	\$1.0
	CLEA	CHF	Swiss Franc Daily Hedged Lead	-5.8%	-3.9%	-15.9%	-8.4%	\$0.7

Source: ETF Securities.

Commodity ETPs - Performance and Assets (Continued)

PRECIOUS METALS				Price Performance				AUM (m\$)
				Last Week	1 Month	3 Months	6 Months	\$10,866.7
Long	AIGP	USD	ETFS Precious Metals	-3.8%	-7.1%	-8.5%	-17.3%	\$38.7
	PHPM	USD	ETFS Physical PM Basket	-2.5%	-7.2%	-9.5%	-17.4%	\$169.2
	ETPMPM	USD	ETFS Physical PM Basket (ASX)	-2.5%	-7.2%	-9.5%	-17.4%	\$3.3
	GLTR	USD	ETFS Precious Metals Trust	-2.6%	-7.0%	-8.3%	-17.1%	\$130.2
	BULL	USD	ETFS Gold	-4.5%	-7.2%	-8.8%	-16.1%	\$77.5
	GBS	USD	Gold Bullion Securities	-4.1%	-6.9%	-7.5%	-15.4%	\$2,744.2
	PHAU	USD	ETFS Physical Gold	-4.1%	-6.9%	-7.5%	-15.4%	\$3,790.7
	SGBS	USD	ETFS Physical Swiss Gold	-4.1%	-6.9%	-7.5%	-15.4%	\$246.5
	GOLD	USD	ETFS Physical Gold (ASX)	-4.1%	-6.9%	-7.5%	-15.4%	\$300.8
	SGOL	USD	ETFS Gold Trust	-4.1%	-6.9%	-7.5%	-15.4%	\$836.6
	AGOL	USD	ETFS Asian Gold Trust	-4.1%	-6.9%	-7.5%	-15.4%	\$10.8
	2830	USD	ETFS Physical Gold (HK)	-4.1%	-6.9%	-7.5%	-15.4%	\$2.2
	WITE	USD	ETFS White Metal Basket Trust	-0.8%	-7.3%	-10.5%	-19.9%	\$18.8
	SLVR	USD	ETFS Silver	-1.9%	-6.9%	-7.8%	-20.7%	\$28.8
	PHAG	USD	ETFS Physical Silver	-0.3%	-6.8%	-6.3%	-18.6%	\$645.0
	ETPMAG	USD	ETFS Physical Silver (ASX)	-0.3%	-6.8%	-6.3%	-18.6%	\$32.6
	SIVR	USD	ETFS Silver Trust	-0.3%	-6.8%	-6.2%	-18.5%	\$274.7
	3117	USD	ETFS Physical Silver (HK)	-0.3%	-6.8%	-6.3%	-18.6%	\$9.5
	PLTM	USD	ETFS Platinum	-3.0%	-8.2%	-14.0%	-23.3%	\$1.4
	PHPT	USD	ETFS Physical Platinum	-1.8%	-7.0%	-12.7%	-22.7%	\$297.6
	ETPMPT	USD	ETFS Physical Platinum (ASX)	-1.8%	-7.0%	-12.7%	-22.7%	\$2.5
	PPLT	USD	ETFS Platinum Trust	-1.8%	-7.0%	-12.7%	-22.8%	\$496.4
	3119	USD	ETFS Physical Platinum (HK)	-1.8%	-7.0%	-12.7%	-22.8%	\$1.9
	PHPD	USD	ETFS Physical Palladium	-0.2%	-9.0%	-17.2%	-17.9%	\$264.5
	ETPMPD	USD	ETFS Physical Palladium (ASX)	-0.2%	-9.0%	-17.2%	-17.9%	\$1.0
	PALL	USD	ETFS Palladium Trust	-0.2%	-9.0%	-17.2%	-18.0%	\$274.6
-1x	SPMT	USD	ETFS Daily Short Precious Metals	3.8%	7.2%	7.9%	17.5%	\$0.1
	SBUL	USD	ETFS Daily Short Gold	4.5%	7.3%	8.3%	16.2%	\$20.8
	SSIL	USD	ETFS Daily Short Silver	1.9%	6.7%	6.2%	19.9%	\$4.6
	SPLA	USD	ETFS Daily Short Platinum	3.0%	8.5%	14.7%	26.5%	\$0.9
2x	LPMT	USD	ETFS Daily Leveraged Precious Metals	-7.5%	-13.9%	-17.0%	-32.8%	\$0.8
	LBUL	USD	ETFS Daily Leveraged Gold	-8.8%	-14.0%	-17.3%	-30.4%	\$41.4
	LSIL	USD	ETFS Daily Leveraged Silver	-3.8%	-13.6%	-16.4%	-39.5%	\$67.8
	LPLA	USD	ETFS Daily Leveraged Platinum	-6.0%	-16.0%	-26.7%	-42.2%	\$5.6
FX Hedged	EPMT	EUR	ETFS EUR Daily Hedged Precious Metals	-3.8%	-7.2%	-8.9%	-17.9%	\$0.2
	PPMT	GBP	ETFS GBP Daily Hedged Precious Metals	-3.8%	-7.1%	-8.7%	-17.5%	\$0.1
	CPMT	CHF	Swiss Franc Daily Hedged Precious Metals	-3.8%	-7.3%	-9.1%	-18.4%	\$0.4
	EBUL	EUR	ETFS EUR Daily Hedged Gold	-4.5%	-7.3%	-9.1%	-16.6%	\$4.3
	EBUL	EUR	ETFS EUR Daily Hedged Physical Gold	-4.4%	-7.1%	-8.9%	-16.3%	\$12.1
	PBUL	GBP	ETFS GBP Daily Hedged Gold	-4.5%	-7.2%	-8.9%	-16.2%	\$0.2
	PBUL	GBP	ETFS GBP Daily Hedged Physical Gold	-4.4%	-7.1%	-8.8%	-16.1%	\$2.7
	CBUL	CHF	Swiss Franc Daily Hedged Gold	-4.5%	-7.4%	-9.3%	-17.1%	\$0.7
	ESVR	EUR	ETFS EUR Daily Hedged Silver	-1.9%	-7.0%	-8.3%	-21.4%	\$2.3
	PSVR	GBP	ETFS GBP Daily Hedged Silver	-1.9%	-6.9%	-8.0%	-21.0%	\$0.4
	CSVR	CHF	Swiss Franc Daily Hedged Silver	-1.9%	-7.1%	-8.4%	-21.9%	\$0.5
	CPLT	CHF	Swiss Franc Daily Hedged Platinum	-3.1%	-8.4%	-14.5%	-24.2%	\$0.6

Source: ETF Securities.

Currency ETPs - Performance and Assets

				Price Performance				AUM (m\$)
USD Crosses				Last Week	1 Month	3 Months	6 Months	\$122.7
Long	LAUD	USD	ETFS Long AUD Short USD	3.5%	-0.5%	-0.9%	-2.8%	\$0.2
	LCAD	USD	ETFS Long CAD Short USD	3.6%	-1.2%	-2.7%	-0.9%	\$0.1
	LCHF	USD	ETFS Long CHF Short USD	2.3%	-0.1%	1.8%	-7.0%	\$0.2
	LEUR	USD	ETFS Long EUR Short USD	2.3%	-0.4%	2.9%	-1.5%	\$0.5
	LGBP	USD	ETFS Long GBP Short USD	0.9%	0.0%	4.3%	4.3%	\$0.1
	LJPY	USD	ETFS Long JPY Short USD	1.4%	1.2%	-2.4%	-4.3%	\$1.5
	LNOK	USD	ETFS Long NOK Short USD	3.5%	-0.7%	-0.2%	-1.2%	\$0.2
	LNZD	USD	ETFS Long NZD Short USD	3.4%	-1.2%	-10.4%	-8.7%	\$0.0
	LSEK	USD	ETFS Long SEK Short USD	3.0%	-0.7%	4.0%	-0.9%	\$0.0
	LCNY	USD	ETFS Long CNY Short USD	-0.1%	-0.1%	0.5%	1.4%	\$1.5
	LINR	USD	ETFS Long INR Short USD	-0.8%	-0.4%	0.1%	-2.3%	\$0.3
Short	SAD	USD	ETFS Short AUD Long USD	-3.3%	0.5%	0.1%	1.3%	\$13.1
	SCAD	USD	ETFS Short CAD Long USD	-3.3%	1.2%	2.2%	-0.4%	\$3.2
	SCHF	USD	ETFS Short CHF Long USD	-2.1%	0.0%	-2.4%	5.8%	\$3.1
	SEUR	USD	ETFS Short EUR Long USD	-2.1%	0.4%	-3.5%	0.0%	\$10.6
	SGBP	USD	ETFS Short GBP Long USD	-0.8%	0.0%	-4.8%	-5.4%	\$40.6
	SJPY	USD	ETFS Short JPY Long USD	-1.3%	-1.2%	2.0%	3.3%	\$7.9
	SNOK	USD	ETFS Short NOK Long USD	-3.1%	0.7%	-0.7%	-0.8%	\$0.1
	SNZD	USD	ETFS Short NZD Long USD	-3.1%	1.2%	10.8%	7.8%	\$0.5
	SSEK	USD	ETFS Short SEK Long USD	-2.8%	0.7%	-4.5%	-0.5%	\$0.6
	SCNY	USD	ETFS Short CNY Long USD	0.2%	-0.1%	-1.1%	-2.9%	\$0.7
	SINR	USD	ETFS Short INR Long USD	1.0%	0.0%	-1.2%	0.1%	\$0.6
3x	LAU3	USD	ETFS 3x Long AUD Short USD	11.0%	-1.5%	-3.6%	-9.7%	\$0.2
	LEU3	USD	ETFS 3x Long EUR Short USD	6.9%	-1.2%	8.0%	-6.0%	\$1.4
	LGB3	USD	ETFS 3x Long GBP Short USD	2.8%	0.0%	12.9%	12.6%	\$0.4
	LJP3	USD	ETFS 3x Long JPY Short USD	4.5%	3.6%	-7.4%	-12.4%	\$0.1
-3x	SAU3	USD	ETFS 3x Short AUD Long USD	-9.4%	1.4%	-0.7%	2.3%	\$2.2
	SEU3	USD	ETFS 3x Short EUR Long USD	-6.2%	1.1%	-10.9%	-1.5%	\$25.3
	SGB3	USD	ETFS 3x Short GBP Long USD	-2.2%	0.0%	-14.2%	-16.1%	\$1.4
	SJP3	USD	ETFS 3x Short JPY Long USD	-3.7%	-3.7%	5.8%	10.2%	\$6.1
GBP Crosses								\$26.6
Long	GBAU	GBP	ETFS Long AUD Short GBP	2.6%	-0.5%	-5.2%	-7.3%	\$0.2
	GBCA	GBP	ETFS Long CAD Short GBP	2.7%	-1.2%	-6.9%	-5.4%	\$0.3
	GBCH	GBP	ETFS Long CHF Short GBP	1.4%	-0.1%	-2.6%	-11.3%	\$0.4
	GBUR	GBP	ETFS Long EUR Short GBP	1.4%	-0.4%	-1.6%	-6.1%	\$1.3
	GBJP	GBP	ETFS Long JPY Short GBP	0.6%	1.2%	-6.7%	-8.6%	\$1.0
	GBUS	GBP	ETFS Long USD Short GBP	-0.8%	0.0%	-4.5%	-5.0%	\$1.0
	GBNZ	GBP	ETFS Long NZD Short GBP	2.5%	-1.2%	-14.3%	-12.9%	\$0.1
	GBSK	GBP	ETFS Long SEK Short GBP	2.1%	-0.7%	-0.5%	-5.5%	\$0.2
	GBNO	GBP	ETFS Long NOK Short GBP	2.6%	-0.7%	-4.5%	-5.7%	\$2.0
Short	AUGB	GBP	ETFS Short AUD Long GBP	-2.4%	0.5%	4.8%	6.3%	\$0.2
	CAGB	GBP	ETFS Short CAD Long GBP	-2.5%	1.2%	6.9%	4.5%	\$0.0
	CHGB	GBP	ETFS Short CHF Long GBP	-1.3%	0.0%	1.9%	10.8%	\$0.3
	URGB	GBP	ETFS Short EUR Long GBP	-1.2%	0.4%	0.9%	5.0%	\$1.8
	JPGb	GBP	ETFS Short JPY Long GBP	-0.3%	-1.2%	6.5%	8.1%	\$3.8
	NZGB	GBP	ETFS Short NZD Long GBP	-2.2%	1.2%	15.6%	12.8%	\$0.1
	NOGB	GBP	ETFS Short NOK Long GBP	-2.3%	0.7%	4.0%	4.3%	\$0.0
	SKGB	GBP	ETFS Short SEK Long GBP	-1.9%	0.7%	-0.1%	4.4%	\$0.0
	USGB	GBP	ETFS Short USD Long GBP	1.0%	0.0%	4.0%	3.9%	\$0.8
3x	AUP3	GBP	ETFS 3x Long AUD Short GBP	8.2%	-1.5%	-15.2%	-21.3%	\$0.2
	EUP3	GBP	ETFS 3x Long EUR Short GBP	4.3%	-1.2%	-5.3%	-17.9%	\$1.4
	JPP3	GBP	ETFS 3x Long JPY Short GBP	2.2%	3.6%	-19.0%	-24.3%	\$0.1
	USP3	GBP	ETFS 3x Long USD Short GBP	-2.3%	0.0%	-13.4%	-14.9%	\$1.4
-3x	SAP3	GBP	ETFS 3x Short AUD Long GBP	-7.0%	1.4%	14.6%	18.8%	\$0.9
	SUP3	GBP	ETFS 3x Short EUR Long GBP	-3.5%	1.1%	2.1%	14.7%	\$4.6
	SYP3	GBP	ETFS 3x Short JPY Long GBP	-0.4%	-3.7%	20.5%	25.4%	\$3.9
	PUS3	GBP	ETFS 3x Short USD Long GBP	3.0%	0.0%	12.0%	11.1%	\$0.8

Source: ETF Securities.

Currency ETPs - Performance and Assets (Continued)

				Price Performance				AUM (m\$)
EUR Crosses				Last Week	1 Month	3 Months	6 Months	\$252.4
Long	EUAU	EUR	ETFS Long AUD Short EUR	1.3%	-0.1%	-3.8%	-1.7%	\$1.8
	ECAD	EUR	ETFS Long CAD Short EUR	1.4%	-0.8%	-5.6%	0.2%	\$1.2
	EUCH	EUR	ETFS Long CHF Short EUR	0.1%	0.3%	-1.2%	-6.0%	\$1.1
	EUGB	EUR	ETFS Long GBP Short EUR	-1.3%	0.4%	1.2%	5.5%	\$0.4
	EUJP	EUR	ETFS Long JPY Short EUR	-0.7%	1.6%	-5.4%	-3.2%	\$2.6
	EUNO	EUR	ETFS Long NOK Short EUR	1.2%	-0.3%	-3.2%	0.0%	\$5.0
	EUNZ	EUR	ETFS Long NZD Short EUR	1.1%	-0.8%	-13.1%	-7.7%	\$0.2
	EUSE	EUR	ETFS Long SEK Short EUR	0.7%	-0.3%	0.9%	0.2%	\$0.8
Short	EUUS	EUR	ETFS Long USD Short EUR	-2.1%	0.4%	-3.2%	0.7%	\$37.0
	AUEU	EUR	ETFS Short AUD Long EUR	-1.1%	0.1%	3.4%	0.4%	\$0.2
	CADE	EUR	ETFS Short CAD Long EUR	-1.2%	0.8%	5.4%	-1.5%	\$0.2
	CHEU	EUR	ETFS Short CHF Long EUR	0.0%	-0.4%	0.8%	5.1%	\$11.0
	GBEU	EUR	ETFS Short GBP Long EUR	1.4%	-0.4%	-1.9%	-6.5%	\$1.4
	JPEU	EUR	ETFS Short JPY Long EUR	0.9%	-1.6%	5.0%	1.9%	\$2.1
	NOEU	EUR	ETFS Short NOK Long EUR	-1.0%	0.3%	2.7%	-1.2%	\$0.1
	NZEU	EUR	ETFS Short NZD Long EUR	-1.0%	0.8%	14.0%	6.5%	\$0.8
3x	SEEU	EUR	ETFS Short SEK Long EUR	-0.6%	0.3%	-1.3%	-1.3%	\$0.1
	USEU	EUR	ETFS Short USD Long EUR	2.3%	-0.4%	2.5%	-2.2%	\$9.5
	EAU3	EUR	ETFS 3x Long AUD Short EUR	4.0%	-0.3%	-11.3%	-6.1%	\$1.1
	ECA3	EUR	ETFS 3x Long CAD Short EUR	4.1%	-2.5%	-16.2%	0.1%	\$1.5
	ECH3	EUR	ETFS 3x Long CHF Short EUR	0.2%	0.9%	-3.7%	-17.2%	\$2.1
	EGB3	EUR	ETFS 3x Long GBP Short EUR	-3.7%	1.1%	3.0%	16.4%	\$0.9
	EJP3	EUR	ETFS 3x Long JPY Short EUR	-2.1%	4.8%	-15.8%	-10.2%	\$2.4
	EUS3	EUR	ETFS 3x Long USD Short EUR	-6.2%	1.1%	-10.0%	0.5%	\$104.5
-3x	AUE3	EUR	ETFS 3x Short AUD Long EUR	-3.1%	0.4%	10.4%	0.1%	\$1.1
	CAE3	EUR	ETFS 3x Short CAD Long EUR	-3.7%	2.5%	16.6%	-5.1%	\$0.3
	CHE3	EUR	ETFS 3x Short CHF Long EUR	0.0%	-1.1%	2.3%	15.5%	\$4.9
	GBE3	EUR	ETFS 3x Short GBP Long EUR	4.5%	-1.2%	-6.2%	-19.1%	\$1.3
	JPE3	EUR	ETFS 3x Short JPY Long EUR	2.9%	-4.8%	15.0%	4.7%	\$1.4
	USE3	EUR	ETFS 3x Short USD Long EUR	6.9%	-1.2%	6.7%	-8.0%	\$25.2
5x	EAU5	EUR	ETFS 5x Long AUD Short EUR	7.1%	-0.4%	-18.7%	-11.7%	\$0.4
	ECA5	EUR	ETFS 5x Long CAD Short EUR	7.0%	-4.0%	-25.9%	-1.1%	\$0.2
	ECH5	EUR	ETFS 5x Long CHF Short EUR	0.3%	1.5%	-6.2%	-27.9%	\$0.6
	EGB5	EUR	ETFS 5x Long GBP Short EUR	-5.8%	1.9%	3.7%	26.4%	\$0.7
	EJP5	EUR	ETFS 5x Long JPY Short EUR	-3.3%	8.1%	-26.0%	-18.2%	\$1.2
	EUS5	EUR	ETFS 5x Long USD Short EUR	-10.2%	1.9%	-17.6%	-2.1%	\$21.1
-5x	AUE5	EUR	ETFS 5x Short AUD Long EUR	-4.9%	0.7%	17.2%	-1.9%	\$0.3
	CAE5	EUR	ETFS 5x Short CAD Long EUR	-6.0%	4.3%	28.5%	-9.6%	\$0.2
	GBE5	EUR	ETFS 5x Short GBP Long EUR	7.9%	-1.9%	-11.4%	-31.2%	\$0.4
	JPE5	EUR	ETFS 5x Short JPY Long EUR	5.1%	-7.9%	24.9%	6.0%	\$0.3
	USE5	EUR	ETFS 5x Short USD Long EUR	11.9%	-1.9%	9.7%	-15.6%	\$4.9

Source: ETF Securities.

				Price Performance				AUM (m\$)
CURRENCY BASKETS				Last Week	1 Month	3 Months	6 Months	\$1.1
Long	LGBB	GBP	ETFS Bullish GBP vs G10 Currency Basket Securities	-0.6%	0.2%	3.1%	5.2%	\$0.0
	LCOM	USD	ETFS Bearish USD vs Commodity Currency Basket Securities	3.5%	-0.9%	-2.5%	-2.5%	\$0.0
	LUSB	USD	ETFS Bullish USD vs G10 Currency Basket Securities	-2.0%	0.1%	-1.2%	-0.3%	\$0.1
Short	SGBB	GBP	ETFS Bearish GBP vs G10 Currency Basket Securities	0.7%	-0.2%	-3.6%	-6.2%	\$0.0
	SCOM	USD	ETFS Bullish USD vs Commodity Currency Basket Securities	-3.2%	0.8%	1.9%	1.0%	\$0.9
	SUSB	USD	ETFS Bearish USD vs G10 Currency Basket Securities	2.2%	-0.2%	0.6%	-1.1%	\$0.1
	ENFX	USD	ETFS G10 vs USD Multi Strategy FX Basket Security	2.8%	-0.1%	-2.5%	-0.9%	\$0.0

Source: ETF Securities.

IMPORTANT INFORMATION

General

This communication has been provided by ETF Securities (UK) Limited (“**ETFS UK**”) which is authorised and regulated by the United Kingdom Financial Conduct Authority (the “**FCA**”).

This communication is only targeted at qualified or professional investors.

The products discussed in this communication are issued by ETFS Commodity Securities Limited (“**CSL**”), ETFS Hedged Commodity Securities Limited (“**HCSL**”), ETFS Hedged Metal Securities Limited (“**HMSL**”), Swiss Commodity Securities Limited (“**SCSL**”), ETFS Foreign Exchange Limited (“**FXL**”), ETFS Industrial Metal Securities Limited (“**IML**”), ETFS Metal Securities Limited (“**MSL**”), ETFS Oil Securities Limited (“**OSL**”), Gold Bullion Securities Limited (“**GBS**” and, together with CSL, HCSL, HMSL, SCSL, FXL, IML, MSL and OSL, the “**Issuers**”) and ETFX Fund Company plc (the “**Company**”). Each Issuer (apart from SCSL) is regulated by the Jersey Financial Services Commission. The Company is an open-ended investment company with variable capital having segregated liability between its sub-funds (each a “**Fund**”) and is organised under the laws of Ireland. The Company is regulated, and has been authorised as a UCITS by the Central Bank of Ireland (the “**Financial Regulator**”) pursuant to the European Communities (Undertaking for Collective Investment in Transferable Securities) Regulations, 2003 (as amended).

Italy: When being made within Italy, this communication is for the exclusive use of the “qualified investors” and its circulation among the public is prohibited.

Switzerland: When being made within Switzerland, this communication is for the exclusive use by “Qualified Investors” (within the meaning of Article 10 of Section 3 of the Swiss Collective Investment Schemes Act (“**CISA**”) and its circulation among the public is prohibited. Securities in SCSL are not shares or units in collective investment schemes within the meaning of CISA. They have not been approved by the Swiss Financial Market Supervisory Authority (FINMA) and are not subject to its supervision. The Swiss Franc Currency-Hedged Commodity Securities are not issued or guaranteed by a supervised financial intermediary within the meaning of CISA.

This document does not constitute a prospectus under the Companies (Jersey) Law 1991 and is not an offer or an invitation to acquire securities in SCSL. This document does not constitute a Swiss listing prospectus under the SIX Listing Rules and the SIX Additional Rules for the listing of Exchange Traded Products. This document must be read in conjunction with the Swiss Listing Prospectus. If there is any inconsistency between this document and the Swiss Listing Prospectus, the Swiss Listing Prospectus shall prevail. Detailed information on the terms and conditions of the Swiss Franc Currency-Hedged Commodity Securities can be found in the Swiss Listing Prospectus under Part 6 – Trust Instrument and Commodity Securities.

US: This communication is not, and under no circumstances is to be construed as, an advertisement or any other step in furtherance of a public offering of shares in the United States or any province or territory thereof, where none of the Issuers, the Company or any securities issued by them are authorised or registered for distribution and where no prospectus for any of the Issuers or the Company has been filed with any securities commission or regulatory authority. Neither this communication nor any copy hereof should be taken, transmitted or distributed (directly or indirectly) into the United States. Neither the Issuers, the Company nor any securities issued by them have been or will be registered under the United States Securities Act of 1933 or the Investment Company Act of 1940 or qualified under any applicable state securities statutes.

This communication may contain independent market commentary prepared by ETFS UK based on publicly available information. ETFS UK does not warrant or guarantee the accuracy or correctness of any information contained herein and any opinions related to product or market activity may change. Any third party data providers used to source the information in this communication make no warranties or representation of any kind relating to such data.

Any historical performance included in this communication may be based on back testing. Back tested performance is purely hypothetical and is provided in this communication solely for informational purposes. Back tested data does not represent actual performance and should not be interpreted as an indication of actual or future performance. Historical performance is not an indication of or a guide to future performance.

The information contained in this communication is neither an offer for sale nor a solicitation of an offer to buy securities nor shall any securities be offered or sold to any person in any jurisdiction in which an offer, solicitation, purchaser or sale would be unlawful under the securities law of such jurisdiction. This communication should not be used as the basis for any investment decision.

Denmark, Finland, Portugal, Spain, Sweden and have been filed with Österreichische Finanzmarktaufsicht (Austrian Financial Market Authority) in Austria, Finanstilsynet (Financial Supervisory Authority) in Denmark, Finanssivalvonta (Finnish Financial Supervisory Authority) in Finland, , Comissão do Mercado de Valores Mobiliários (Portuguese Securities Market Commission) in Portugal, Comisión Nacional del Mercado de Valores (Securities Market Commission) in Spain and the Finansinspektionen (Financial Supervisory Authority) in Sweden. The prospectuses (and any supplements thereto) for these entities may be distributed to investors in Austria, Finland, Portugal, Spain, Denmark and Sweden.

For Belgian Investors: The prospectus (and any supplements thereto) for GBS has been passported from the United Kingdom into Belgium and has been filed with the Commission Bancaire, Financière et des Assurances in Belgium. The prospectus (and any supplements thereto) for GBS may be distributed to investors in Belgium.

ETFS UK is required by the FCA to clarify that it is not acting for you in any way in relation to the investment or investment activity to which this communication relates. In particular, ETFS UK will not provide any investment services to you and or advise you on the merits of, or make any recommendation to you in relation to, the terms of any transaction. No representative of ETFS UK is authorised to behave in any way which would lead you to believe otherwise. ETFS UK is not, therefore, responsible for providing you with the protections afforded to its clients and you should seek your own independent legal, investment and tax or other advice as you see fit.

Risk Warnings

Securities issued by the Issuers and the Company may be structured products involving a significant degree of risk and may not be suitable for all types of investor. This communication is aimed at sophisticated, professional and institutional investors. Any decision to invest should be based on the information contained in the prospectus (and any supplements thereto) of the relevant Issuer or the Company which includes, inter alia, information on certain risks associated with an investment. The price of any securities may go up or down and an investor may not get back the amount invested. Securities may be priced in US Dollars, Euros, or Sterling, and the value of the investment in other currencies will be affected by exchange rate movements. Investments in the securities of the Issuers or the shares of the Company which provide a short and/or leveraged exposure are only suitable for sophisticated, professional and institutional investors who understand leveraged and compounded daily returns and are willing to magnify potential losses by comparison to investments which do not incorporate these strategies. Over periods of greater than one day, investments with a short and/or leveraged exposure do not necessarily provide investors with a return equivalent to a return from the unleveraged long or unleveraged short investments multiplied by the relevant leverage factor.

Investors should refer to the section entitled “Risk Factors” in the relevant prospectus for further details of these and other risks associated with an investment in the securities offered by the Issuers and the Company.

The relevant prospectus for each Issuer and the Company may be obtained from www.etfsecurities.com. Please contact ETFS UK at +44 20 7448 4330 or info@etfsecurities.com for more information.

Issuers

General: The FCA has delivered to the regulators listed below certificates of approval attesting that the prospectuses of the Issuers indicated have been drawn up in accordance with Directive 2003/71/EC.

For Dutch, French, German and Italian Investors: The prospectuses (and any supplements thereto) for each of the Issuers (apart from SCSL) have been passported from the United Kingdom into France, Germany, Italy and the Netherlands and have been filed with the l’Autorité des Marchés Financiers (AMF) in France, Bundesanstalt für Finanzdienstleistungsaufsicht (BaFin) in Germany, CONSOB and the Bank of Italy in Italy and the Authority Financial Markets (Autoriteit Financiële Markten) in the Netherlands. Copies of prospectuses (and any supplements thereto) and related regulatory documentation, including annual reports, can be obtained in France from HSBC France, 103, Avenue des Champs Elysées, 75008 Paris, in Germany from HSBC Trinkhaus & Burkhardt, AG, Konsortialgeschäft, Königsallee 21/23, 40212 Düsseldorf and in the Netherlands from ABN AMRO Bank (Nederland) N.V. (t) +31 20 527 2467 or faxed request to +31 20 527 1928. The prospectuses (and any supplements thereto) for each of the Issuers (apart from SCSL) may be distributed to investors in France, Germany, Italy and the Netherlands.

This communication is not a financial analysis pursuant to Section 34b of the German Securities Trading Act (Wertpapierhandelsgesetz – WpHG) and consequently does not meet all legal requirements to warrant the objectivity of a financial analysis and is also not subject to the ban on trading prior to the publication of a financial analysis.

This communication is not addressed to or intended directly or indirectly, to (a) any persons who do not qualify as qualified investors (gekwalificeerde beleggers) within the meaning of section 1:1 of the Dutch Financial Supervision Act as amended from time to time; and/or (b) in circumstances where other exemptions or dispensations from the prohibition the Dutch Financial Supervision Act or the Exemption Regulation of the Act on Financial Supervision apply.

None of the Issuers is required to have a license pursuant to the Dutch Financial Supervision Act as it is exempt from any licensing requirements and is not regulated by the Netherlands Authority for the Financial Markets and consequently no prudential and conduct of business supervision will be exercised.

For Austrian, Danish, Finnish, Portuguese, Spanish and Swedish Investors: The prospectuses (and any supplements thereto) for each of CSL, HCSL, HMSL, IML, MSL and FXL have been passported from the United Kingdom into Austria,

For Swiss investors: The prospectus (and any supplements thereto) for SCSL may be distributed to investors in Switzerland.

Other than as set out above investors may contact ETFS UK at +44 (0)20 7448 4330 or at info@etfsecurities.com to obtain copies of prospectuses and related regulatory documentation, including annual reports. Other than as separately indicated, this communication is being made on a “private placement” basis and is intended solely for the professional / institutional recipient to which it is delivered.

Securities issued by the Issuers are direct, limited recourse obligations of the relevant Issuer alone and are not obligations of or guaranteed by any of UBS AG (“**UBS**”), Merrill Lynch Commodities Inc. (“**MLCI**”), Merrill Lynch International (“**MLI**”), Bank of America Corporation (“**BAC**”), Shell Trading Switzerland, Shell Treasury, HSBC Bank USA N.A., JP Morgan Chase Bank, N.A., Morgan Stanley & Co International plc, Morgan Stanley & Co. LLC, Deutsche Bank AG any of their affiliates or anyone else or any of their affiliates. Each of UBS, MLCI, MLI, BAC,

Shell Trading Switzerland, Shell Treasury, HSBC Bank USA N.A., JP Morgan Chase Bank, N.A., Morgan Stanley & Co International plc, Morgan Stanley & Co. LLC and Deutsche Bank AG disclaims all and any liability whether arising in tort, contract or otherwise (save as referred to above) which it might have in respect of this communication or its contents otherwise arising in connection herewith.

The Dow Jones-UBS Commodity IndexesSM are a joint product of Dow Jones Opco, LLC ("Dow Jones Opco"), a subsidiary of S&P Dow Jones Indices LLC, and UBS Securities LLC ("UBS"), and have been licensed for use. Dow Jones® and DJ are trademarks of Dow Jones Trademark Holdings LLC. UBS® is a registered trademark of UBS AG. S&P® is a registered trademark of Standard & Poor's Financial Services LLC. The securities issued by CSL, HCSL and SCSL although based on the Dow Jones-UBS Commodity IndexesSM, are not sponsored, endorsed, sold or promoted by Dow Jones, UBS, Dow Jones Opco or any of their respective subsidiaries or affiliates, and none of Dow Jones, UBS, Dow Jones Opco or any of their respective affiliates, makes any representation regarding the advisability of investing in such product(s).

The Morgan Stanley Indices are the exclusive property of Morgan Stanley & Co. LLC ("Morgan Stanley"). Morgan Stanley and the Morgan Stanley index names are service mark(s) of Morgan Stanley or its affiliates and have been licensed for use for certain purposes by ETF Securities Limited in respect of the securities issued by FXL and HMSL. The securities issued by FXL and HMSL are not sponsored, endorsed, or promoted by Morgan Stanley, and Morgan Stanley bears no liability with respect to any such securities. The prospectuses of FXL and HMSL contain a more detailed description of the limited relationship Morgan Stanley has with each of FXL and HMSL and any related securities. No purchaser, seller or holder of securities issued by FXL, HMSL or any other person or entity, should use or refer to any Morgan Stanley trade name, trademark or service mark to sponsor, endorse, market or promote this product without first contacting Morgan Stanley to determine whether Morgan Stanley's permission is required. Under no circumstances may any person or entity claim any affiliation with Morgan Stanley without the prior written permission of Morgan Stanley.

Funds

Ireland: This communication has prepared for delivery to professional investors in the Republic of Ireland and other countries of the European Union/European Economic Area in which certain of the Funds are registered with the local financial regulator. Please contact ETFS UK at +44 (0)20 7448 4330 or at info@etfsecurities.com for further information of the Company and details as to which countries and to which category of investors this communication can be communicated.

Denmark: This communication cannot be communicated to investors in Denmark except in response to their unsolicited request.

Netherlands: Each Fund has been registered with the Netherlands Authority for the Financial Markets following the UCITS passport-procedure pursuant to section 2:72 of the Dutch Financial Supervision Act.

France: Any subscription for shares of the Funds will be made on the basis of the terms of the prospectus, the simplified prospectus and any supplements or addenda thereto. The Company is a UCITS governed by Irish legislation and approved by the Financial Regulator as UCITS compliant with European regulations although may not have to comply with the same rules as those applicable to a similar product approved in France. Certain of the Funds have been registered for marketing in France by the Authority Financial Markets (Autorité des Marchés Financiers) and may be distributed to investors in France. Copies of all documents (i.e. the prospectus (including any supplements or addenda thereto), the key investor information documents (KIIDs), the latest annual reports and the memorandum of incorporation and articles of association) are available in France, free of charge, at the French Centralizing Agent, Société Générale, Securities Services, at 29 Boulevard Haussmann – 75009 Paris – France.

Germany: The offering of the shares of the remaining Funds has been notified to the German Financial Services Supervisory Authority in accordance with section 132 of the German Investment Act. The prospectus (including any supplements or addenda thereto), the key investor information documents (KIIDs), copies of the memorandum and articles of association of the Company and the annual and semi-annual report can be obtained free of charge upon request at the Paying and Information Agent in Germany, HSBC Trinkaus & Burkhardt AG, Königsallee 21-23, 40212 Düsseldorf. The current offering and redemption prices as well as the net asset value and possible notifications of the investors can also be requested free of charge at the same address. In Germany the shares will be settled as co-owner shares in a Global Bearer certificate issued by Clearstream Banking AG. This type of settlement only occurs in Germany because there is no direct link between the English and German clearing and settlement systems Crest and Clearstream. For this reason the ISIN used for trading of the shares in Germany differs from the ISIN used in other countries.

Norway: The Company and certain of the Funds have been registered with the Financial Supervisory Authority of Norway (Finanstilsynet), and may be marketed and sold to professional investors in Norway.

Other than as separately indicated, this communication is being made on a "private placement" basis and is intended solely for the professional / institutional recipient to which it is delivered.

None of the index providers of the Funds referred to herein nor their licensors make any warranty or representation whatsoever either as to the results obtained from use of the relevant indices and/or the figures at which such indices stand at any particular day or otherwise. None of the index providers shall be liable to any person for any errors or significant delays in the relevant indices nor shall be under any obligation to advise any person of any error or significant delay therein. 093



The
intelligent
alternative

ETF Securities (UK) Limited
3 Lombard Street
London
EC3V 9AA
United Kingdom

t +44 (0)207 448 4330
f +44 (0)207 448 4366
e info@etfsecurities.com
w etfsecurities.com